

Instructions of how to use PC_LINK software

1、 Run PC_LINK software, shown as figure 1:

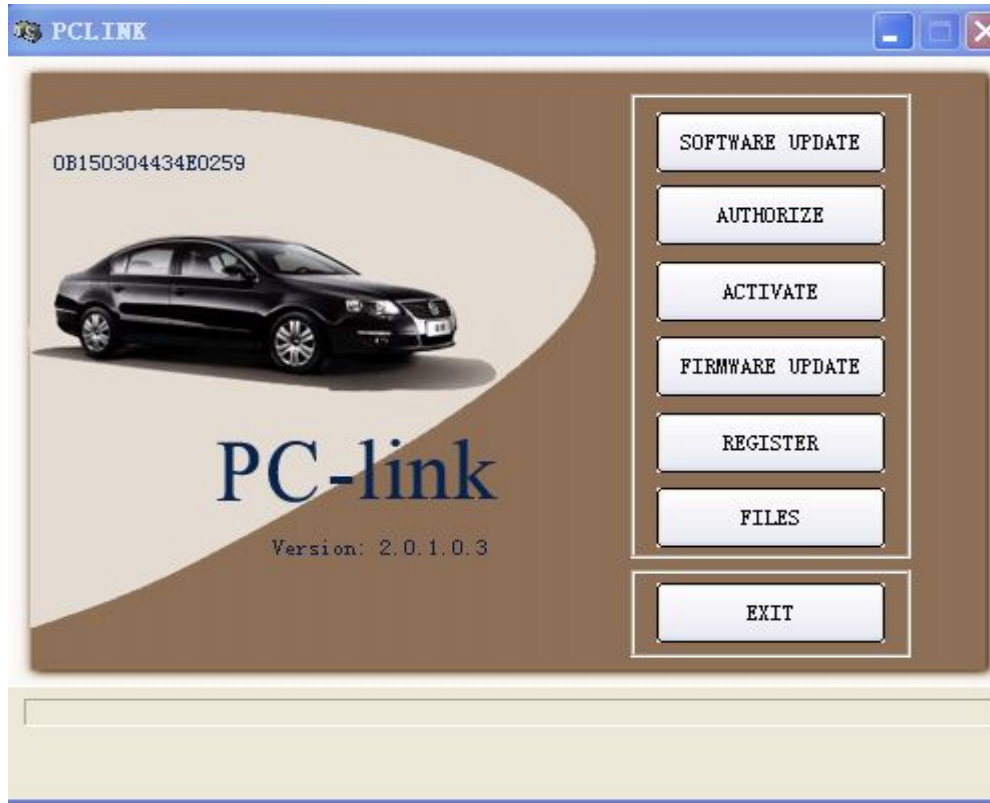


Figure 1

2、 After software update successfully, you will see the following messages, shown as figure 2:



Figure 2

3、open the folder, such as `D:\PC_link_20103\Release\0b150304434e0259\`

Shown as figure 3:

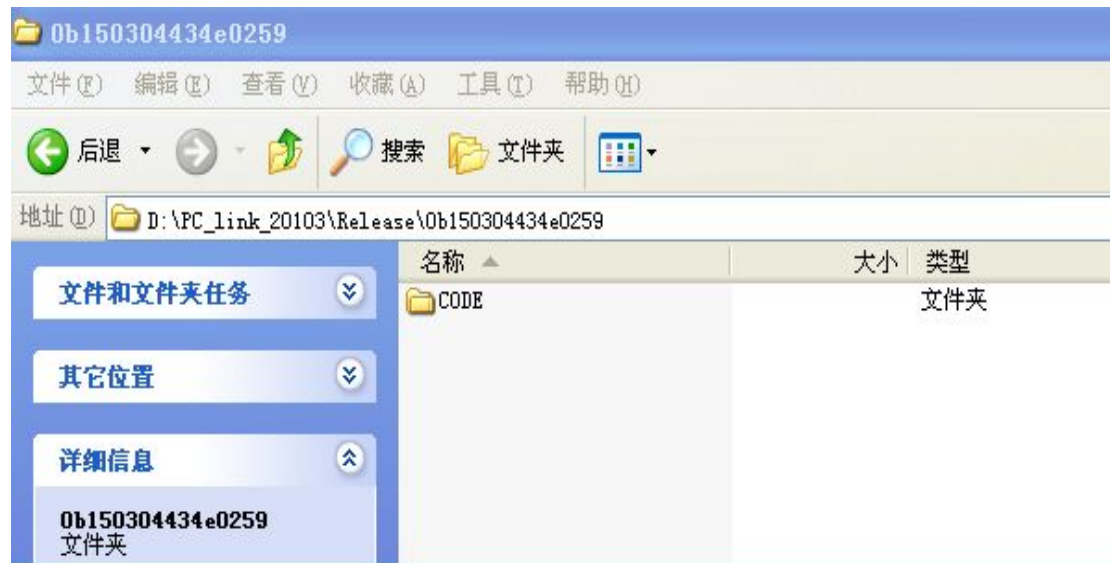


Figure 3

If you cannot find the above folder, you can also press the button “file” on PC_LINK. Shown as figure 4:



Figure 4

- 4、 Take out the SD card from your machine and connect it to your PC. Copy folder CODE and paste it to SD card, shown as figure 5:

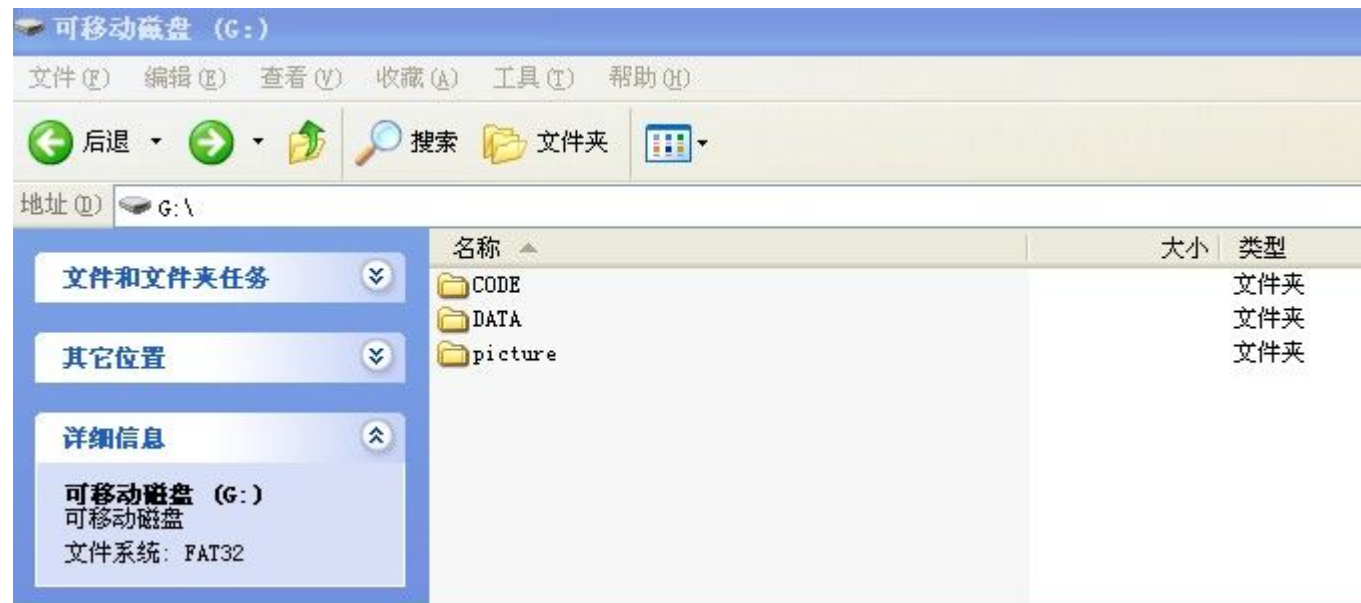


Figure 5

- 5、 Finished, connect SD card well back to your machine.